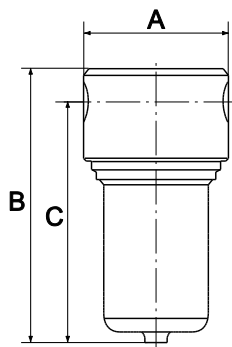
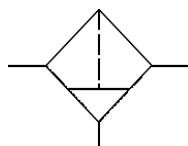


Stainless steel filters for use in the chemical industry, mining, plant construction and special machinery industries, pneumatics, etc.

Max. input pressure	30 bar
Max. medium temperature	80 °C
Max. ambient temperature	80 °C
Housing	Stainless steel casting 1.4401 (AISI 316)
Sealant	NBR
Drain valve	Locking screw
Filter rating	25 µm
Flow rate measurement	At $P_1 = 6$ bar and pressure drop $\Delta p \leq 1$ bar

**Stainless steel filter**

Art. No.	Type No.	Thread	Flow rate l/min	A mm	B mm	C mm
137347	580FC1-14	G 1/4	2010	64,0	127,0	113,0
137348	580FC1-38	G 3/8	2920	64,0	127,0	113,0
137349	580FC3-12	G 1/2	5355	82,0	133,0	113,0
137350	580FC3-34	G 3/4	6855	82,0	133,0	113,0
137351	580FC4-1	G 1	9910	120,0	198,0	165,0
137352	580FC4-112	G 1 1/2	9910	120,0	198,0	165,0



580FC3-12

**Accessories / spare parts for stainless steel filter G 1/4 and G 3/8 (Size 1)**

Art. No.	Type No.	Description
137319	580FC-BMA	Stainless steel container
137119	580FM-EF	Replacement filter element
137321	580FC-ED	Replacement seal

**Accessories / spare parts for stainless steel filter G 1/2 and G 3/4 (Size 3)**

Art. No.	Type No.	Description
137319	580FC-BMA	Stainless steel container
137119	580FM-EF	Replacement filter element
137321	580FC-ED	Replacement seal

**Accessories / spare parts for stainless steel filter G 1 and G 1 1/2 (Size 4)**

Art. No.	Type No.	Description
137320	580FC4-BMA	Stainless steel container
137120	580FM4-EF	Replacement filter element
137322	580FC4-ED	Replacement seal



580FC-BMA



580FM-EF



580FC-ED